

MANN+  
HUMMEL

ScandMist  
100R OEM MD  
Oil smoke  
filtration system

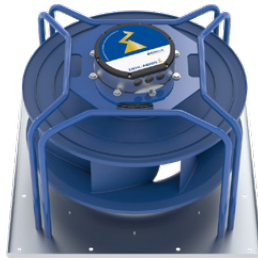
# ScandMist 100R OEM MD

## Oil smoke filtration system

General	Product	Units	ScandMist 100R OEM MD
	Application		Neat Oil
	Capacity (nominal)	m <sup>3</sup> /h	1000
	Part number		D1B10RB100000A
<b>Connections</b>	Inlet type		Jacobs
	Inlet diameter	mm	200
	Drain		2 off, 2" Threaded (BS 21) Female
	Air inlet options		Left/Right/Back/Bottom
	Exhaust		Right
<b>Filters</b>	Filters/stage		1
	Stage 1 filter (coalescer)		9709006038
	Stage 2 filter (HEPA H13)		800527035232
	Stage 3 filter (activated carbon)		Option
	Available external pressure drop	Pa	200
<b>Motor</b>	Type		Electrically commutated
	Part number		9709005278
	Quantity		1
	Mains supply		3 - 380-480 V, 50/60 Hz
	Ventilation		TEFC
	Power	kW	3,7
	Maximum current	A	4,6
	Speed	RPM	Max 4100
	Environmental protection		IP54
<b>Physical properties</b>	Width	mm	1203
	Height	mm	832 (excluding inlet transition)
	Depth	mm	789 (excluding inlet transition)
	Weight	kg	Clean filters: 170, wet filters: 210
	Noise level	dB(A)	<69
	Fan		Backward bent blades
	Finish		Powder coating inside and outside
<b>Controls</b>	Control system		Micaflex MF-PFA
	Differential pressure gauges		2 off
<b>Options</b>	Oil pump		N/A
	Level sensor		9908900187
	Prefilter demister		Included
	Spray		Not included
	Silencer		Insulated fan housing
	Airmat Eco NoGlass		Not included

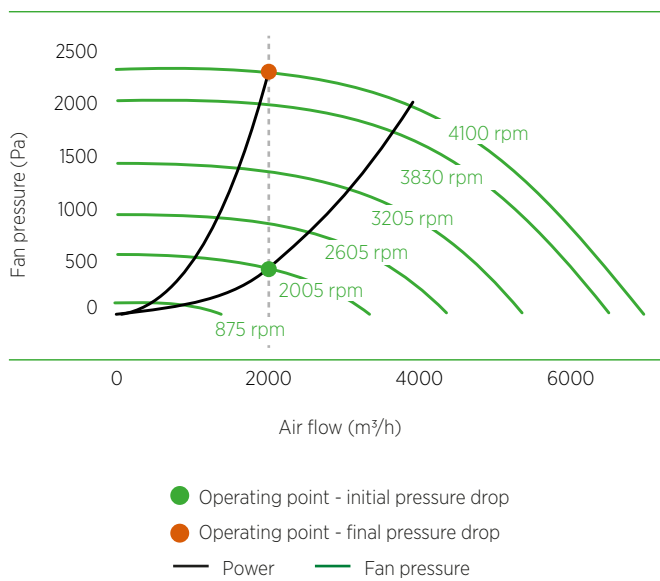
## EC fan and motor

The standard EC fan and motor delivers good energy efficiency with quiet operation.



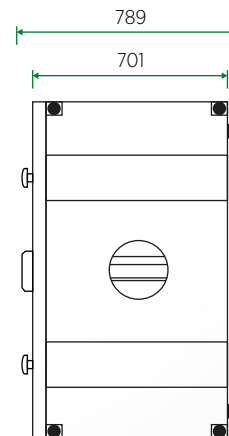
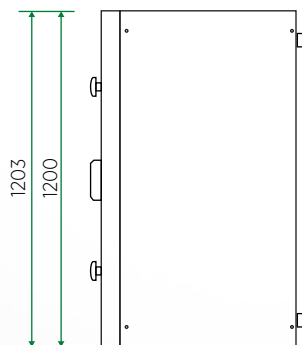
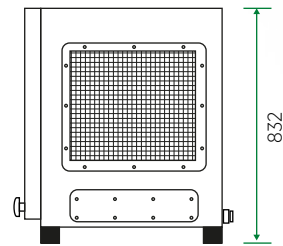
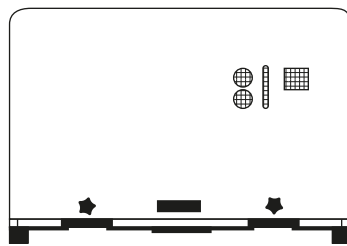
## Connecting interface

Wiring via a Harting male/female connector. Quick and easy installation with all connecting interfaces at one spot.



Power		Signal exchange	
1	L1	1	ON/OFF (make contact) <span style="float:right">Input: ON/OFF</span>
2	L2	2	M
3	L3	3	Output Signal: In Operation <span style="float:right">Output: In Operation</span>
4	N	4	M
5	PE	5	AL1 <span style="float:right">Alarm 1, Motor/Power</span>
		6	M
		7	AL2 <span style="float:right">Alarm 2, System pressure high/low/operation signal</span>
		8	N
		9	AL3 <span style="float:right">Alarm 3, System pressure high/low/operation signal</span>
		10	N
		11	Reset <span style="float:right">Reset for alarms</span>
		12	N
		13	AI2 <span style="float:right">Analog output 2 of Micaflex MF-PFA</span>
		14	N

## Dimensions Units: mm



**MANN +  
HUMMEL**

